

Sport & Leisure

YONGLI offers a complete belting solution for the Sport & Leisure industry.





Table of Contents



Treadmill Belt

4

- **Standard Treadmill belts**
 - **Maintenance Free (MF) Treadmill Belts**
 - **Structure**
 - **Product Features**
 - **Technical data**
-

Non-motorized Treadmill Belt

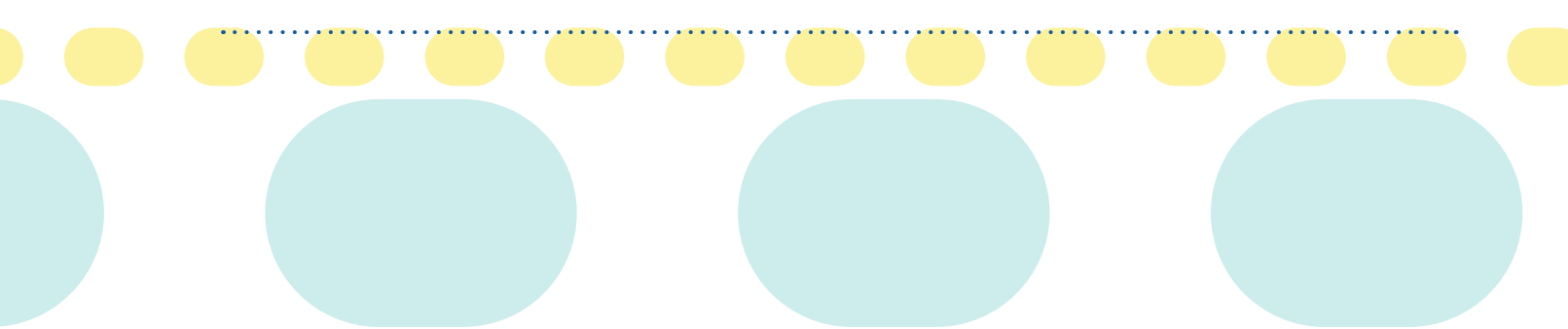
10

- **Product Features**
 - **Technical data**
-

Ski Machine Belt

12

- **Technical data**
 - **Product Features**
-





Treadmill Belt

YONGLI's R&D on treadmill belts has started since 2004. Our product range covers all portable, home-use and commercial-use treadmills.

Through a careful selection of bottom fabric, cover material and structure, we offer a quiet, stable and smooth jogging experience that suits your own speed.

Standard Treadmill belts



▶ Home-use Treadmill Belts

Thickness: < 1.8mm
Type: S17/7, S16/1

▶ Home & Commercial-use

Thickness: 2.0~3.0mm
Type: S23, S25

▶ Commercial-use Treadmill Belts

Thickness: 3.0~5.0
Type: S31, S45

Diverse fabric types

YONGLI has developed various fabric structure to offer smooth jogging experience in different scenarios.

MF fabric

Maintenance Free (MF) fabric requires no lubrication during its thousands-miles service life.



Pre-waxed fabric

Pre-waxed bottom saves time for initial assembling and testing. Besides that it helps to extend the treadmill lifespan and prevent noise during running.



Low noise fabric

Low noise fabric reduces the friction noise by its special fabric structure.



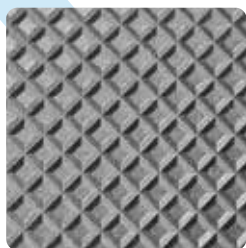
Non-waxed fabric

Non-waxed fabric is an economic type that function well with different lubrications.



Profile

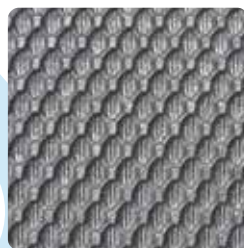
YONGLI offers different options of top covers to prevent slippery in different speed.



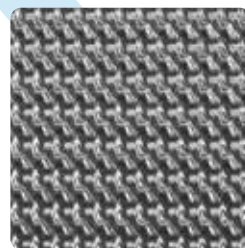
Diamond



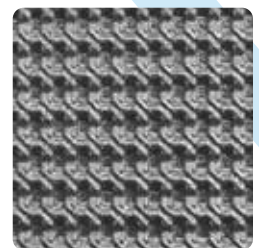
Sandblast



Golf



Medium Grip



Rough Top

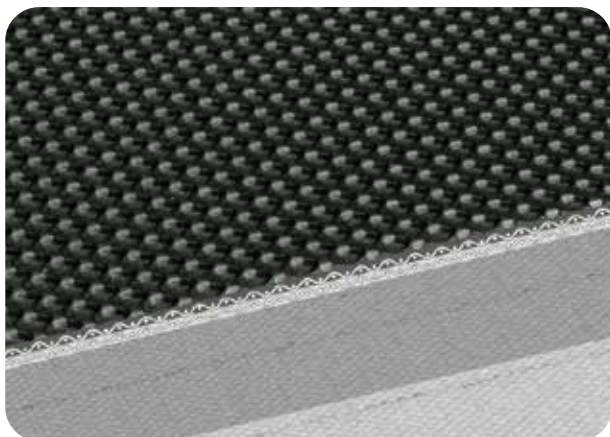


Maintenance Free (MF) Treadmill Belts

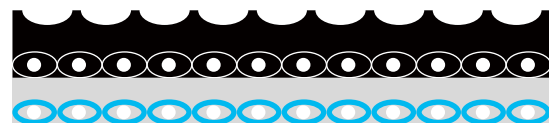
Treadmill belt is the part where you contact the most on a treadmill. So a typical treadmill belt deserve your regular care and lubrication.

However traditional lubrication methods, such as wax, or silicon oil are still not once-for-all solutions. YONGLI has developed Maintenance Free (MF) treadmill belts that may offer you thousands miles of trouble free jogging experience.

Structure



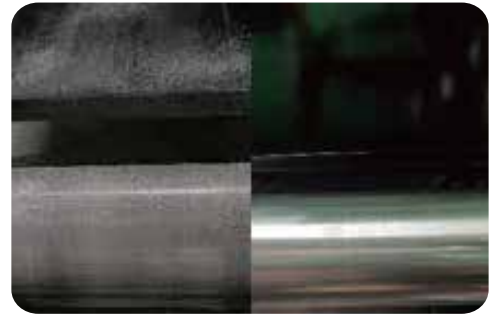
- ▶ **Conveying side:** Black PVC, #7 Golf
- ▶ **Tensile layer:** High strength Polyester
- ▶ **Running side:** High lubrication fabric



Product Features

Maintenance Free Technique

- **Non-waxed lubrication**
No wax residues on pulleys, preventing excess wear of components.



Wax residues on pulley

Pulley using MF belt

High Lubrication Bottom

- **Lubrication free**
The bottom fabric do not need lubrication, saving maintenance costs and efforts.
- **Prevent wear of pulleys and other components**
- **Extends the lifespan of the treadmill**



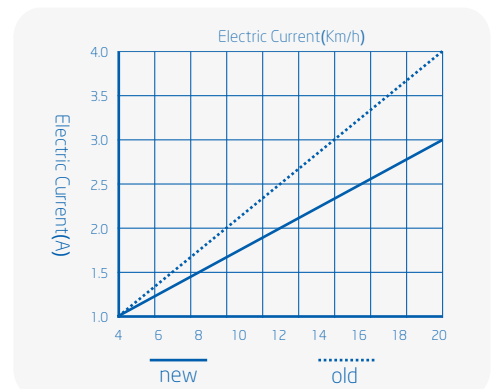
Optimized Fabric Structure

- **Gentle starts and stops**
- **Good resonant absorption, more quiet in high speed (<68 dB at 12km/hr)**
- **Frayless belt edges**
- **Good alignment**
- **Excellent flatness**



Low Bottom Friction

- **Lower energy consumption (20% off in 16km/hr)**
- **Low power fluctuation**



Technical data

Belt type	6D code	Color	Cover Profile	Cover Material	Thickness (mm)	Tension 1% N/mm	Minimum roll diameter (mm)	Temperature (°C)
S23D(MF)	102078	Black	Golf	PVC	2.3	8	40	-10/+70
S15/7	102023	Black	Golf	PVC	1.5	5	20	-15/+60
S15/1	102031	Black	Diamond	PVC	1.6	5	20	-15/+60
S16/1B	S10394	Black	Diamond	PVC	1.7	7	30	-15/+60
S16/1	102008	Black	Diamond	PVC	1.8	7	30	-15/+60
S16/31	102020	Black	Sandblast	PVC	1.8	7	30	-15/+60
S18	102002	Black	Golf	PVC	2.2	7	40	-15/+60
S18 WAX	S10368	Black	Golf	PVC	2.2	7	40	-15/+60
S23	102003	Black	Golf	PVC	2.3	8	40	-15/+60
S25	102004	Black	Golf	PVC	2.5	8	40	-15/+60
S25 WAX	S10320	Black	Golf	PVC	2.5	8	40	-15/+60
S31	102005	Black	Medium Grip	PVC	3.1	10	40	-15/+60
S45	102007	Black	Rough Top	PVC	4.2	10	50	-15/+60

All data are measured in a standard environment (temperature $23^{\circ}\text{C} \pm 2^{\circ}\text{C}$, relative humidity $50\% \pm 5\%$ by ISO 554). Data reliability comes from YONGLI's lab testing and application experience. Due to deviations of application environments such as temperature, humidity, chemical mixtures, and chemical resistance of different materials, we strongly recommend you to observe and test in the real environment. We cannot provide guarantees and promises for individual cases, but we are happy to advise you on application and sample testing. For details, please contact your YONGLI representatives.

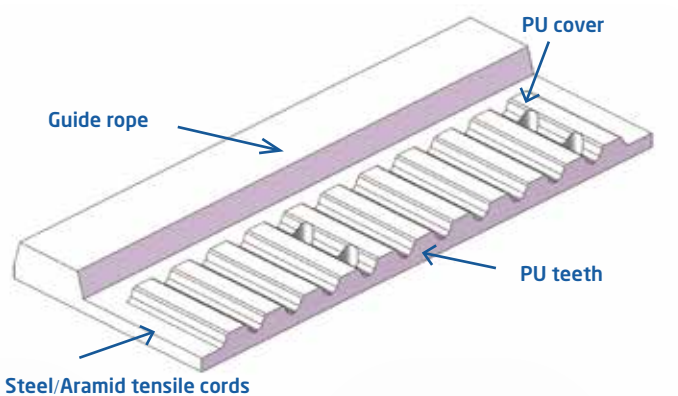


Non-motorized Treadmill

Different as motorized treadmills, Non-motorized Treadmills are muscle powered. Non-motorized treadmills give runners full control of speed, and prevent to move too fast.

YONGLI developed a full timing belt series for non-motorized treadmills, featured by maintenance-free, low noise, good alignment, small pulley diameter and smooth operation.

Product Features



Excellent Alignment

- Integrated guide rope design, avoid mistraking during operation.

Different tensile cord options

- **Steel cords:** Low elongation, excellent traction force, excellent relaxation
- **Aramid cords:** Light weight, heat resistance, flame retardant, no emission of toxic gas after burning

Seamless structure

- Seamless structure ensures no strength loss, improving its reliability and long life span.

Technical data

Series	Belt type	Tooth profile	Cords	Seamless ring length (mm)	Width (mm)
AT10					
	50-ATG-3600	AT10	Steel cords	3600	50
P					
	50-PG-3600	P	Steel cords	3600	50
	47-PG-3726	P	Steel cords	3726	47
	50-PK-3600	P	Aramid cords	3600	50
	52-PK-3720	P	Aramid cords	3720	52
T10					
	50-TG-3540	T10	Steel cords	3540	50
	50-TG-3720	T10	Steel cords	3720	50
	50-TG-3600	T10	Steel cords	3600	50
	50-TK-3540	T10	Aramid cords	3540	50
	46-TK-3480	T10	Aramid cords	3480	46
	50-TK-3600	T10	Aramid cords	3600	50
	50-TK-3720	T10	Aramid cords	3720	50
	30-TK-9600	T10	Aramid cords	9600	30
	75-TK-3720	T10	Aramid cords	3720	75
	52-TK-3720	T10	Aramid cords	3720	52

* YONGLI CAN OFFER CUSTOMIZED DIMENSIONS UPON REQUESTS.

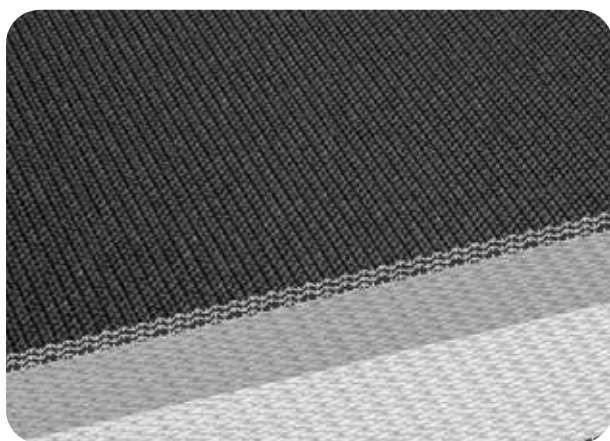


Ski Machine Belt

Indoor skiing opens doors for winter sport enthusiasts around the globe. Whether it is to prepare for the first real visit to the snow, or to improve skills on professional level, indoor skiing machines make skiing accessible to everyone without needing mountains, snow or space.

YONGLI has developed large width indoor skiing - up to 8000 mm. They have superior lateral stability, flatness and low noise features that ensures a safe and enjoyable experience.

Technical data



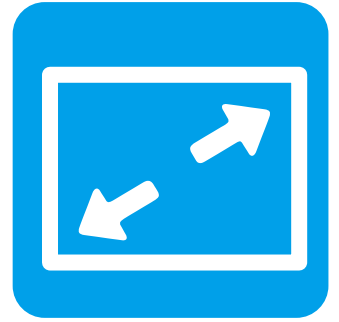
P32(B)-37DA

Belt type	P32(B)-37DA
6D code	132026
Color	Black
Cover Profile	Fabric
Cover Material	PVC
Thickness (mm)	2.6
Tension (1% N/mm)	18
Minimum roll diameter(mm)	80
Temperature (°C)	- 15/+80

Product Features

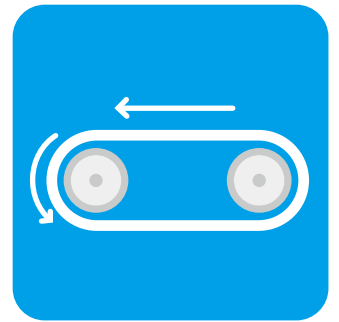
Extra width

Width upto 8 meters, allowing more players to enjoy this sport together.



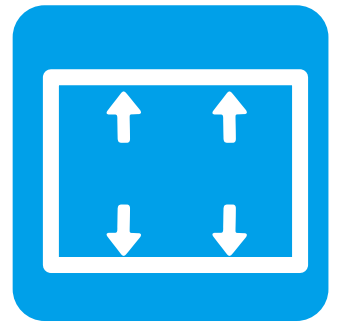
Lateral rigidity & flatness

Lateral rigidity & flatness matters not only the experience, but also safety. YONGLI's rich experiences in longitudinal splicing ensures an excellent flatness and rigidity at lateral direction.



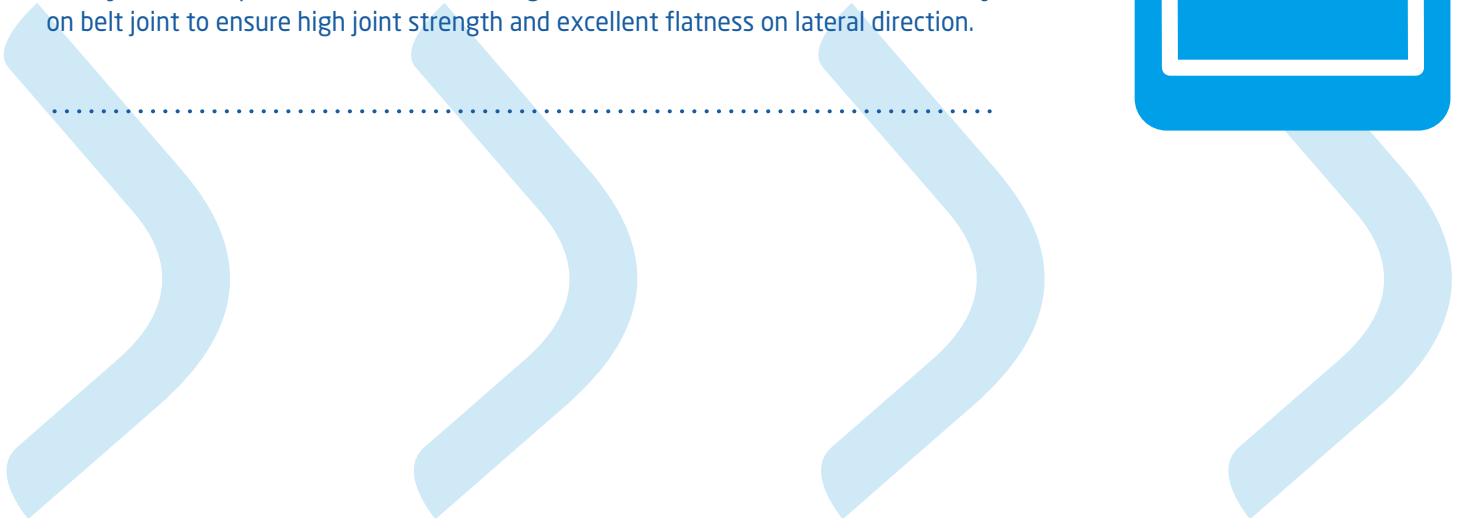
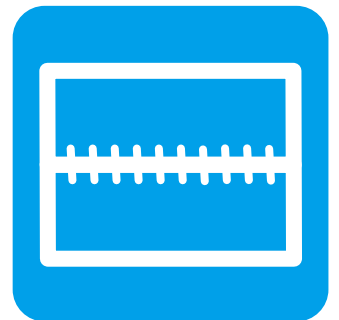
High belt strength

The skiing machine belt bears the load of ski grass, players, ski gears, etc, thus it must have excellent belt strength and breaking force to eliminates any possible risks.



Reliable splicing

Safety is not comprisable on an indoor skiing machine. Thus YONGLI handle cautiously on belt joint to ensure high joint strength and excellent flatness on lateral direction.



YOUR BELTING SOLUTION PROVIDER

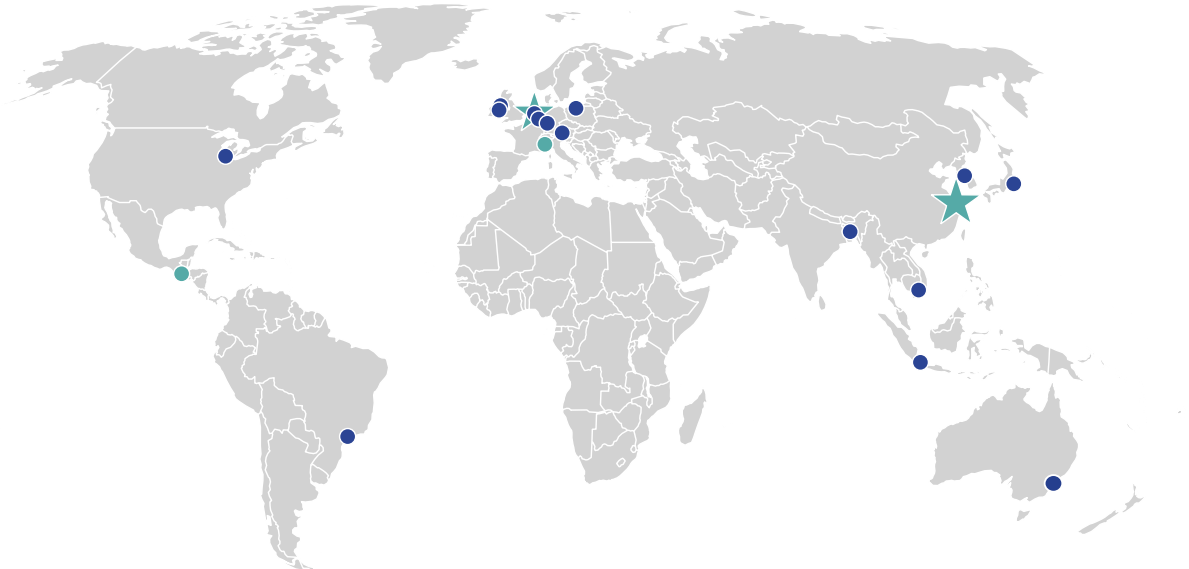
Since its establishment in 1989, YONGLI has always been working to become a total belting solution provider. With a strong focus on research and development, innovation is in the DNA of our company. In recent years, with the implementation of new production technologies, advancements in product development and closely monitoring market trends, YONGLI is stepping up to become not just a producer of light duty conveyor belts, but rather a manufacturer of total belting solutions. With a strong customer orientation, people at YONGLI walk the extra mile to innovate together with our customers and find the right solution for every application.

YONGLI is not just any belting solution provider, we are your belting solution provider.



THINK GLOBAL, ACT LOCAL

YONGLI has a strong international presence with branch companies and an extensive partner network set up globally, serving customers in over 60 countries across the globe. Powered by its own global production sites in China and the Netherlands, YONGLI acts locally to offer reliable belting solutions and on-time services to end users and oems; and always seeks to grow together with our customers and partners in all aspects.



★ GLOBAL HEADQUARTER

- YONGLI Belting
+86 21 5988 3585

★ EUROPEAN HEADQUARTER

- YONGLI Europe
+31 226 399 928

● Asia Pacific

- YONGLI China
+86 21 5988 3585
- YONGLI Japan
+81 090 2252 3751
- YONGLI Korea
+82 31 953 4062
- YONGLI Indonesia
+62 21 22652866-68
- YONGLI Bangladesh
+880 1977 976 466
- YONGLI Vietnam
+84 903851636
- YONGLI Australia
+61 408 000 544

● Europe

- YONGLI Germany
+49 6182 77 286-50
- YONGLI Poland
+48 523 954 460
- YONGLI Austria
+43 662 261353
- YONGLI Netherlands
+31 75 631 39 17 (Wormer)
+31 475 535 700 (Echt)
- YONGLI UK & Ireland
+353 1 627 9624 (Dublin, IE)
+44 28 9751 2920 (Saintfield, GB)

● North & South America

- YONGLI America
+1 219 763 7920
- YONGLI Brazil
+55 19 99291 3660

